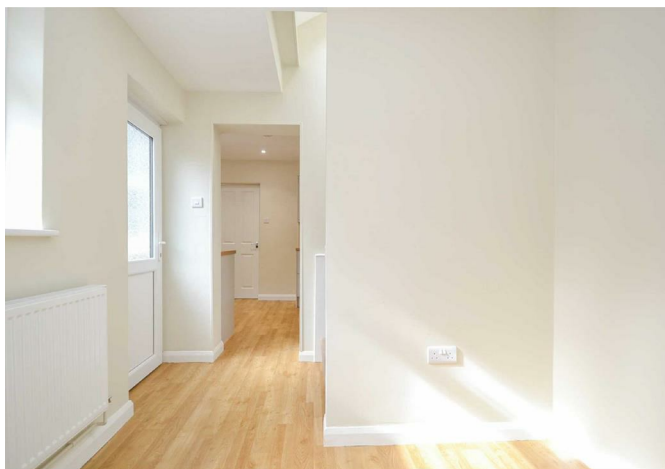




69, Frankwell, Shrewsbury, SY3 8JR
£850 Per Month



69, Frankwell, Shrewsbury, SY3 8JR

£850 Per Month

Well maintained, modernised two bedroom Victorian terraced house a short walk from Shrewsbury town centre.

Available: 31/01/26

Description

Comprising: Living room, modern kitchen including oven & gas hob, dining room, bathroom including shower, two double bedrooms. Double glazing to the rear, secondary glazing to the front. Gas central heating. Small patio area leading to attractive tiered rear garden. EPC C

*Walls being decorated prior to new tenancy



Unfurnished

Council Tax Band: B

Available: 31st January 2026

EPC: C

Floor Plans



These particulars, whilst believed to be accurate are set out as a general outline only for guidance and do not constitute any part of an offer or contract. Intending purchasers should not rely on them as statements of representation of fact, but must satisfy themselves by inspection or otherwise as to their accuracy. No person in this firm's employment has the authority to make or give any representation or warranty in respect of the property.